

MID-LEVEL INFRARED DRYERS

LITTLERed SERIES

**15 YEAR
HEATER WARRANTY**



LR-X2-30



LR-X2-54



LR-X3-30



LR-X3-54

All LittleRed series dryers have a tilting heater design. Works great for curing hats!!

CE CERTIFIED
BY CERTIFICATION EXPERTS
THE NETHERLANDS

	Dual Infrared Elements LR-X2-30	Dual Infrared Elements LR-X2-54	Three Infrared Elements LR-X3-30	Three Infrared Elements LR-X3-54
Total Wattage	5,200w @240V	10,400w @240V	7,800w @240V	15,600w @240V
Belt Width	30" (76cm)	54" (137.2cm)	30" (76cm)	54" (137.2cm)
Heater Width**	24" (61cm)	48" (122cm)	24" (61cm)	48" (122cm)
Conveyor Length	66" (1.68m)	66" (1.68m)	88" (2.24m)	88" (2.24m)
Chamber Length	27" (69cm)	27" (69cm)	41" (104cm)	41" (104cm)
Powered Exhaust	300 CFM (8.5 CMM)	350 CFM (9.9 CMM)	388 CFM (11 CMM)	550 CFM (15.6 CMM)
	CURE TIMES			
Plastisol @ 25 secs.*	260+/hr	520+/hr	360+/hr	720+/hr
Waterbased/Discharge @ 70 secs.*	90+/hr	180+/hr	120+/hr	240+/hr

Features

- HEAVY DUTY** "X-Series" Conveyor Belt Roller Tracking System with 30" (76 cm) or 54" (137 cm) wide Teflon coated fiberglass belt
- ACCURATE ADJUSTABLE** Digital PID Temperature controller is accurate to +/-1°F
2" - 7" (5 - 17.7 cm) belt-to-heater clearance, adjustable separately on each side for each heater
- EXHAUST CONSISTENT** Powered exhaust to remove fumes and moisture
DC belt speed control w/ digital display
- EXPANDABLE** Add 18" (46cm) and 36" (92 cm) chambers and/or 18" (46 cm) belt extensions

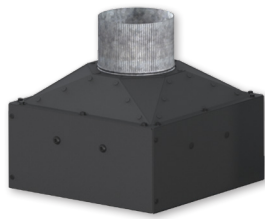
Options

- Additional chambers can be added as well as belt extensions
- Heavy duty belt motor (Standard on X2-54)
- Locking casters for easy mobility

* Production speeds are estimates are based on 16" centers and will vary depending on ink manufacturer, humidity of shop, and other variables.
** Recommended maximum image width = heater width minus 4" (10cm).



INFRARED DRYER ACCESSORIES



EXHD

Add-On exhaust for
D-100 and D-1000

S-100



Mobile Stand w/ wheels

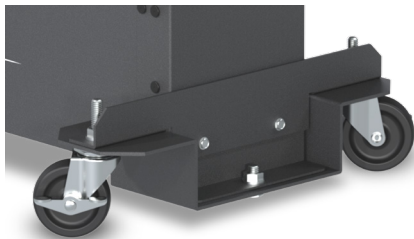
Two sizes available

- 27 x 27" (68.6 x 68.6 cm)
- 27 x 35" (68.6 x 88.9 cm)

Optional screen shelves and drawer kits

Perfect for:

- Presses and dryers
- PTF-100 powder shaker
- Additional worktop space

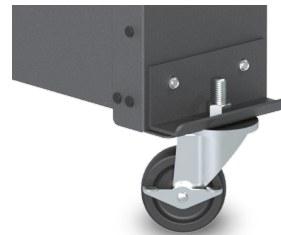


WS-E-DD

Drop Down Wheel Set for
DB, LR & EC-I Dryers

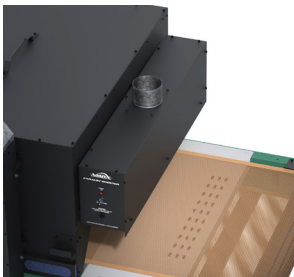
WS-EHD

Drop Down Wheel Set for
EC-II, ER & BR Dryers



WS-EC

Standard Wheel Set for
all non-tabletop Dryers

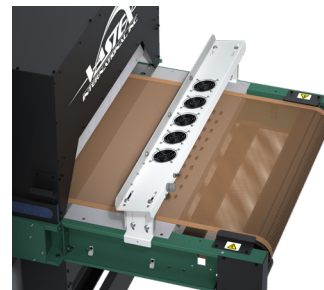


EXHAUST HOOD

Strongly recommended for DTF adhesives

FEATURES

- Removes fumes at exit the dryer
- EXH-18 fits 18" (46cm) to 30" (76cm) wide belts
- EXH-42 fits 54" (137cm) wide belts
- EXH-66 fits 78" (198cm) wide belts
- Available in 120v or 240v



CONVEYOR AIR BAR

FEATURES

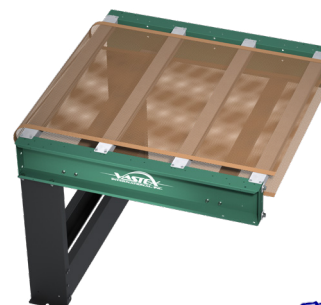
- Cools ink as garments exit the dryer
- CABX-30 fits 33.1-39.1" (84-99cm) wide conveyor
- CABX-54 fits 58.3-64.3" (148-163cm) wide conveyor
- CABX-78 fits 82.3-88.3" (209-224cm) wide conveyor
- Works on many non-Vastex dryers
- Available in 120v or 240v



HAT SUPPORT RAIL

FEATURES

- Angles hats so front is parallel with heaters
- HR-1 fits EconoRed II dryers
- HR-2 fits EconoRed III & BigRed Dryers



CONVEYOR EXTENSIONS

Extend your conveyor in
18" (46cm), 36" (92cm) and
54" (137cm) increments



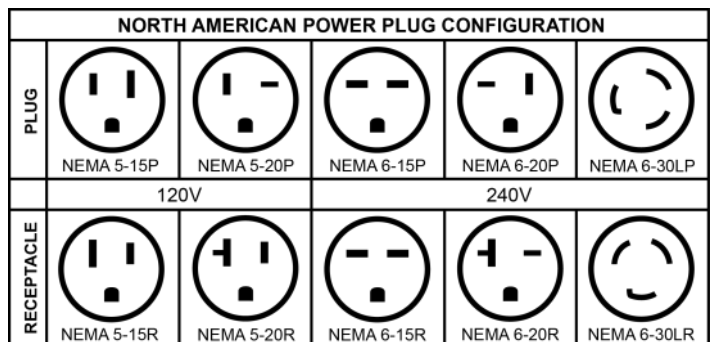
LittleRed X1, X2, & X3

Technical Specifications



	LR-X1-18	LR-X1-30	LR-X2-30	LR-X1-54	LR-X2-54	LR-X3-30	LR-X3-54	LR-X3-78		
Heater Warranty	15 Year	15 Year	15 Year	15 Year	15 Year	15 Year	15 Year	15 Year		
Defect Warranty	3 Year	3 Year	3 Year	3 Year	3 Year	3 Year	3 Year	3 Year		
Time in Tunnel Range (mm:ss)	00:17 - 01:20	00:17 - 01:46	00:14 - 01:28	00:17 - 01:46	00:11 - 01:39	00:11 - 01:35	00:11 - 01:35	00:11 - 01:35		
Belt Speed	0.6 - 7.4 FPM (0.18 - 2.3 MPM)	0.6 - 7.4 FPM (0.18 - 2.3 MPM)	1.4 - 17.7 FPM (0.4 - 5.4 MPM)	0.6 - 7.4 FPM (0.18 - 2.3 MPM)	1.4 - 17.7 FPM (0.4 - 5.4 MPM)	1.4 - 7.4 FPM (0.18 - 2.3 MPM)	1.4 - 7.4 FPM (0.18 - 2.3 MPM)	1.4 - 7.4 FPM (0.18 - 2.3 MPM)		
Exhaust (Free Air)	144 CFM (4.1 CMM)	144 CFM (4.1 CMM)	300 CFM (8.5 CMM)	300 CFM (8.5 CMM)	350 CFM (9.9 CMM)	650 CFM (18.4 CMM)	550 CFM (15.6 CMM)			
Exhaust Diameter	4" (10.16 cm)	4" (10.16 cm)	6" (15.24 cm)	6" (15.24 cm)	6" (15.24 cm)	8" (20.32 cm)	8" (20.32 cm)	8" (20.32 cm)		
Overall Length	48" (122 cm)	48" (122 cm)	66" (168 cm)	66" (168 cm)	66" (168 cm)	88" (224 cm)	88" (224 cm)	88" (224 cm)		
Overall Width	30" (76 cm)	41" (105cm)	41" (105 cm)	65" (166 cm)	65" (166 cm)	41" (105 cm)	65" (166 cm)	89" (226 cm)		
Overall Height	48" (122cm)	48" (122cm)	50" (127 cm)	48" (122cm)	50" (127 cm)	50" (127 cm)	50" (127 cm)	50" (127 cm)		
Belt Width	18" (46cm)	30" (76 cm)	30" (76 cm)	54" (137cm)	54" (137cm)	30" (76cm)	54" (137cm)	78" (198 cm)		
Chamber Length	18" (45.7 cm)	18" (46cm)	27" (69cm)	18" (46cm)	27" (69cm)	41"(104cm)	41"(104cm)	41"(104cm)		
Chamber Infeed Width	21" (53cm)	33.5" (85cm)	33.5" (85 cm)	58.5" (149 cm)	58.5" (149 cm)	33.5" (85 cm)	58.5" (149 cm)	58.5" (149 cm)		
Chamber Infeed Height(adjustable)	2" - 7" (5 - 17.7 cm)	2" - 7" (5 - 17.7 cm)	2" - 7" (5 - 17.7 cm)	2" - 7" (5 - 17.7 cm)	2" - 7" (5 - 17.7 cm)	2" - 7" (5 - 17.7 cm)	2" - 7" (5 - 17.7 cm)	2" - 7" (5 - 17.7 cm)		
Heat Range (@ Heater)	0-750 F° (0-399 C°) @ 120 or 240V	0-900F° (0-482C°) @ 240V 0-750F° (0-399C°) @ 120V	0-900 F° (0-482 C°) @ 240V	0-900 F° (0-482 C°) @ 240V	0-900 F° (0-482 C°) @ 240V	0-900 F° (0-482 C°) @ 240V	0-900F° (0-482C°) @ 240V	0-900F° (0-482C°) @ 240V		
Heater Size	16"x16"(40.6x40.6 cm)	12" x 24" (30 x 61 cm)	12" x 24" (30 x 61 cm)	12" x 48" (30 x 122 cm)	12" x 48" (30 x 122 cm)	12" x 24" (30 x 61 cm)	12" x 48" (30 x 122 cm)	12" x 72" (30 x 183 cm)		
Total Wattage	1,625 Watts	240V / 1 @ 2,600 Watts 120V / 1 @ 2,000 Watts	5,200 Watts Total	5,200 Watts	10,400 Watts @ 240V 12,000 Watts @ 380V	7,800 Watts Total	15,600 Watts Total	23,400 Watts Total		
Cost/hr to operate based on 10 cents/kwh	16 cents	26 cents @ 240V 20 cents @ 120V	52 cents	52 cents	\$1.04	78 cents	1.56 cents	2.34 cents		
Electrical Specs	Amperage shown is for reference only, actual amperage at installation will depend on exact line voltage.									
120V, 1 Phase 3 wire 50/60 HZ	FLA = 12.5A	FLA = 16.5A	N/A	N/A	N/A	N/A	N/A	N/A		
208V, 1 Phase 3 wire 50/60 HZ	FLA = 8.5A	FLA = 12.5A	FLA = 30A	FLA = 30A	FLA = 58A	N/A	N/A	N/A		
240V, 1 Phase 3 wire 50/60 HZ	FLA = 6.3A	FLA = 11A	FLA = 24A	FLA = 24A	FLA = 49A	FLA = 37A	FLA = 72A	FLA = 109A		
240V, 3 Phase 4 wire 50/60 HZ	N/A	N/A	N/A	FLA = 18A	FLA = 30A	FLA = 22A	FLA = 43A	FLA = 64A		
380V, 3 Phase 4 wire 50/60 HZ	N/A	N/A	FLA = 10A	FLA = 10A	FLA = 20A	FLA = 13A	FLA = 26A	FLA = 39A		
Electrical Connection	Cordset Included NEMA 5-15P (120V) NEMA 6-15P (240V)	Cordset Included NEMA 5-20P (120V) NEMA 6-15P (240V)	All amps shown are FLA (Full Load Amps), not recommended line size! Dryers on this page must be hard wired to the power terminal provided.						A licensed electrician must be consulted and should refer to articles, 210.20(a), 215.3 and 310 of the NEC code.	
Unit Weight	172 lbs (78 kg)	220 lbs (100 kg)	304 lbs (138 kg)	380 lbs (173 kg)	480 lbs (218 kg)	424 lbs (193 kg)	Call for details	Call for details		
Shipping Weight**	295 lbs (134 kg)	350 lbs (156 kg)	495 lbs (225 kg)	650 lbs (295 kg)	780 lbs (354 kg)	548 lbs (249 kg)	815 lbs (370 kg)	1,600 lbs (726 kg)		
Shipping Dimensions**	37" x 45" x 40" (94 x 115 x 102 cm)	37" x 45" x 40" (94 x 115 x 102 cm)	49" x 45" x 60" (125 x 115 x 153 cm)	69" x 49" x 59" (176 x 125 x 150 cm)	69" x 49" x 60" (176 x 125 x 153 cm)	49" x 45" x 56" (125 x 115 x 143 cm)	69" x 49" x 60" (176 x 125 x 153 cm)	97" x 61" x 59" (246 x 155 x 150 cm)		

1 in = 2.54 cm
1 lb = 0.454 kg



* Production speeds are estimates are based on 16" centers and will vary depending on ink manufacturer, humidity of shop, and other variables.

**All shipping weights and dimensions are for continental US shipping only. Call for other shipping specifications. Ex-works from Bethlehem, PA.