

PRODUCTION INFRARED DRYERS

ECONORED VI SERIES

**15 YEAR
HEATER WARRANTY**



ER-VI-78

- Digital belt speed display for more accurate control
- Focused exhaust system to remove fumes/moisture within chamber
- Adjustable exhaust from 100% to 10% for lightweight items like DTF film
- Excellent air flow to cool the skin of the dryer
- Cures plastisol, water-based, discharge, and DTF adhesive!

CE CERTIFIED
BY CERTIFICATION EXPERTS
THE NETHERLANDS

	30" Belt Version ER-VI-30	54" Belt Version ER-VI-54	78" Belt Version ER-VI-78
Standard Wattage	15,600w	31,200w	46,800w
Belt Width x Length	30" x 13¼' (76.2 x 404cm)	54" x 13¼' (137 x 404cm)	78" x 13¼' (198 x 404cm)
Heater Width*	24" (61cm)	48" (122cm)	72" (183cm)
Chamber (tunnel) Length	9' (275cm)	9' (275cm)	9' (275cm)

	1 Row	2 Rows	3 Rows
CURE TIMES***			
Plastisol @ 25 secs.**	900+/hr	1,800+/hr	2,700+/hr
Water Based/Discharge @ 70 secs.**	300+/hr	600+/hr	900+/hr

Features

- HEAVY DUTY** "X-Series" Conveyor Belt Tracking System
- PRECISE** Infrared Focusing System provides more power for less \$\$
- ADJUSTABLE** 2" - 7" (5 - 17.7 cm) belt-to-heater height adjustment****
- ACCURATE** Digital PID Temperature controller is accurate to +/-1° F
- CONSISTENT** Heavy duty DC belt speed motor with digital voltage display
- INNOVATIVE** Engineered to be shorter and smaller with high heat and production.
- EXPANDABLE** Add heat chambers and belt extensions. (HD Drive required over 17' long)

Options

- Side heaters (expand cure zone to full belt width)****
- Add heat chambers @ 3' (.91m) or 4.5' (1.37m) long
- Belt extensions front or rear
- 3 Phase & 208, 380, 480 voltages available
- Exhaust Hood, provides extra fume extraction
- Hat support rail
- Locking casters for easy mobility
- HD Drive (standard on 78")

* Recommended maximum image width = heater width minus 6" (15cm).

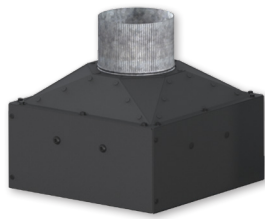
** Production speeds are estimates are based on 16" centers and will vary depending on ink manufacturer, humidity of shop, and other variables.

*** Production speeds are estimates are based on 16" centers and will vary depending on ink manufacturer, humidity of shop, and other variables.

**** Heater height 4-7" (10.2 - 17.7cm) with optional side heaters.



INFRARED DRYER ACCESSORIES



EXHD

Add-On exhaust for
D-100 and D-1000

S-100



Mobile Stand w/ wheels

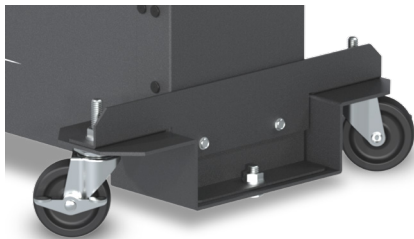
Two sizes available

- 27 x 27" (68.6 x 68.6 cm)
- 27 x 35" (68.6 x 88.9 cm)

Optional screen shelves and drawer kits

Perfect for:

- Presses and dryers
- PTF-100 powder shaker
- Additional worktop space

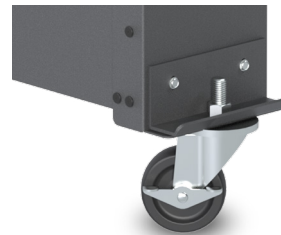


WS-E-DD

Drop Down Wheel Set for
DB, LR & EC-I Dryers

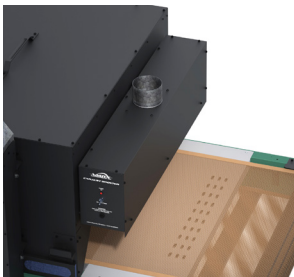
WS-EHD

Drop Down Wheel Set for
EC-II, ER & BR Dryers



WS-EC

Standard Wheel Set for
all non-tabletop Dryers

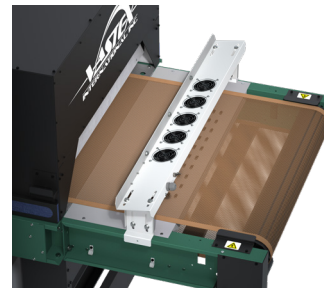


EXHAUST HOOD

Strongly recommended for DTF adhesives

FEATURES

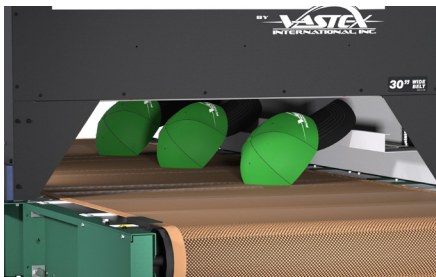
- Removes fumes at exit the dryer
- EXH-D1H fits D-100 and D-1000 (chamber mounted)
- EXH-18 fits 18" (46cm) to 30" (76cm) wide belts
- EXH-42 fits 54" (137cm) wide belts
- EXH-66 fits 78" (198cm) wide belts
- Available in 120v or 240v



CONVEYOR AIR BAR

FEATURES

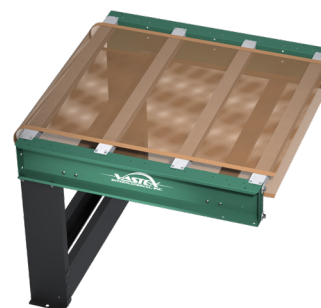
- Cools ink as garments exit the dryer
- CABX-30 fits 33.1-39.1" (84-99cm) wide conveyor
- CABX-54 fits 58.3-64.3" (148-163cm) wide conveyor
- CABX-78 fits 82.3-88.3" (209-224cm) wide conveyor
- Works on many non-Vastex dryers
- Available in 120v or 240v



HAT SUPPORT RAIL

FEATURES

- Angles hats so front is parallel with heaters
- HR-1 fits EconoRed II dryers
- HR-2 fits EconoRed III & BigRed Dryers



CONVEYOR EXTENSIONS

Extend your conveyor in
18" (46cm), 36" (92cm) and
54" (137cm) increments



EconoRed VI & BigRed

Technical Specifications

CE	ER-VI-30	ER-VI-54	ER-VI-78	BR4D-V30	BR4D-V54
Heater Warranty	15 Year	15 Year	15 Year	15 Year	15 Year
Defect Warranty	3 Year	3 Year	3 Year	3 Year	3 Year
Shirts / Hr* Plastisol @ 25 secs	900+	2 Rows - 1,800+	3 Rows - 2,700+	475+	3 Rows - 1,425+ 2 Rows - 950+
Shirts / Hr* - Waterbased/ Discharge	300+ @ 70 secs.	2 Rows - 600+ @ 70 secs.	3 Rows - 900+ @ 70 secs.	216+ @ 50 secs.	3 Rows - 648+ @ 50 secs. 2 Rows - 432+ @ 50 secs.
Shirts/hr* - DTG/digital	N/A	N/A	N/A	60 @ 3 min. 24 @ 8 min.	3 Rows - 180 @ 3 min, 72 @ 8 min. 2 Rows - 120 @ 3 min, 48 @ 8 min.
Time in Tunnel Range (mm:ss)	00:34 - 02:58	00:34 - 02:58	00:34 - 02:58	00:12 - 01:45	00:12 - 01:45
Belt Speed	3 - 36 FPM (0.9 - 11 MPM)	3 - 36 FPM (0.9 - 11 MPM)	3 - 36 FPM (0.9 - 11 MPM)	1.8 - 23.6 FPM (0.6 - 7.2 MPM)	1.8 - 23.6 FPM (0.6 - 7.2 MPM)
Exhaust (Free Air)	2 @ 650 CFM (18.4 CMM)	2 @ 550 CFM (15.6 CMM)	2 @ 700 CFM (19.8 CMM)	500 CFM (14.2 CMM)	700 CFM (19.8 CMM)
Exhaust Stack Diameter	2 @ 8" (20.32 cm)	2 @ 8" (20.32 cm)	2 @ 8" (20.32 cm)	6" (15.24 cm)	6" (15.24 cm)
Overall Length	159" (404 cm)	159" (404 cm)	159" (404 cm)	105" (267 cm)	105" (267 cm)
Overall Width	45.2" (114.8 cm)	69.2" (175.8 cm)	93.2" (236.7 cm)	47.3" (120.2 cm)	71.4" (181.4 cm)
Overall Height	60.9" (154.7 cm)	60.9" (154.7 cm)	60.9" (154.7 cm)	51.6" (131.1 cm)	51.6" (131.1 cm)
Belt Width	30" (76 cm)	54" (137 cm)	78" (198 cm)	30" (76 cm)	54" (137 cm)
Chamber Length	108" (275cm)	108" (275cm)	108" (275cm)	54" (137cm)	54" (137 cm)
Chamber Infeed Width	34.5" (88 cm)	58.5" (149 cm)	82.5" (209cm)	34.5" (88 cm)	58.5" (149 cm)
Chamber Infeed Height (adjustable)	2" - 7" (5 - 17.7 cm)	2" - 7" (5 - 17.7 cm)	2" - 7" (5 - 17.7 cm)	4.5" - 7" (11.5 - 17.7 cm)	4.5" - 7" (11.5 - 17.7 cm)
Heat Range (@ Heater)	0-900 F° (0-482 C°) @ 240V	0-900 F° (0-482 C°) @ 240V	0-900 F° (0-482 C°) @ 240V	0-900F° (0-482C°) @ 240V 0-1150F° (621C°) - booster	0-900F° (0-482C°) @ 240V 0-1150F° (621C°) - booster
Heater Size & Standard Wattage**	12" x 24" (30 x 61 cm) 6 @ 2,600 = 15,600 Watts 240V, 400V, & 480V	12" x 48" (30 x 122 cm) 6 @ 5,200 = 31,200 Watts 240V, 400V, & 480V	12" x 72" (30 x 183 cm) 6 @ 7,800 = 46,800 Watts 240V, 400V, & 480V	4 @ 12" x 24" (30 x 61 cm) Zone 1 @ 3,600 Watts Zone 2 @ 7,800 Watts 11,400 Watts Total 240V & 480V (10,800 Watts Total 400V) Optional Side Heaters 2 @ 3" x 47" (7.6 x 120 cm) 1,400 watts per side	4 @ 12" x 48" (30 x 122 cm) Zone 1 @ 7,200 Watts Zone 2 @ 15,600, Watts 22,800 Watts Total 240V (21,600 Watts Total 400V) (28,800 Watts Total 480V) Optional Side Heaters 2 @ 3" x 47" (7.6 x 120 cm) 1,400 watts per side
Cost / hour to operate based on 10 cents / kwh	\$1.56 @ 240V	\$3.12 @ 240V	\$4.68 @ 240V	\$1.14 @ 240V	\$2.28 @ 240V
Electrical Specs**	Amperage shown is for reference only, actual amperage at installation will depend on exact line voltage.				
240V, 1 Phase 3 wire 50/60 HZ	FLA = 76A	N/A	N/A	FLA = 59A	FLA = 110A
240V, 3 Phase 4 wire 50/60 HZ	FLA = 45A	FLA = 89A	N/A	FLA = 35A	FLA = 67A
400V, 3 Phase 5 wire 50/60 HZ	FLA = 27A	FLA = 50A	FLA = 73A	FLA = 21A	FLA = 36A
480V, 3 Phase 4 wire 50/60 HZ	FLA = 24A	FLA = 42A	FLA = 61A	FLA = 18A	FLA = 31A
Electrical Connection	All amps shown are FLA (Full Load Amps) , not recommended line size! Dryers on this page must be hard wired to the power terminal provided. A licensed electrician must be consulted and should refer to articles, 210.20(a), 215.3 and 310 of the NEC code.				
Shipping Weight***	1 @ 900 lbs (409 kg) 1 @ 755 lbs (343 kg)	1 @ 1,375 lbs (624 kg) 1 @ 1,325 lbs (601 kg)	1,170 lbs (531 kg)	1,018 lbs (462 kg)	1,438 lbs (653 kg)
Shipping Dimensions***	2 @ 61" x 43" x 65" (155 x 110 x 166 cm)	2 @ 93" x 65" x 65" (237 x 166 x 166 cm)	107 x 64" x 73" (272 x 163 x 185 cm)	72" x 61" x 63" (183 x 155 x 160 cm)	92" x 65" x 63" (234 x 161 x 160 cm)

1 in = 2.54 cm
1 lb = 0.454 kg

* Production speeds are estimates are based on 16" centers and will vary depending on ink manufacturer, humidity of shop, and other variables. Optional side heaters are required for 3 rows.

** Alternate wattages and voltage may be available by special request. (208V)

*** All shipping weights and dimensions are for continental US shipping only. Call for other shipping specifications. Ex-works from Bethlehem, PA.