

PRODUCTION INFRARED DRYERS

ECONORED SERIES

**15 YEAR
HEATER WARRANTY**



ER-III-54

- Digital belt speed display for more accurate control
- Focused exhaust system to remove fumes/moisture within chamber
- Excellent air flow to cool the skin of the dryer
- Adjustable exhaust from 100% to 10% for lightweight items like DTF film
- Cures plastisol, water-based and discharge inks!

CE CERTIFIED
BY CERTIFICATION EXPERTS
THE NETHERLANDS

	30" Belt Version		54" Belt Version		78" Belt Version
	ER-II-30	ER-III-30	ER-II-54	ER-III-54	ER-III-78
Standard Wattage	7,200w	10,800w	14,400w	21,600w	23,400w
Belt Width x Length	30" x 7¼' (76.2 x 220cm)	30" x 8¾' (76.2 x 267cm)	54" x 7¼' (137 x 220cm)	54" x 8¾' (137 x 267cm)	78" x 8¾' (198 x 267cm)
Heater Width*	24" (61cm)	24" (61cm)	48" (122cm)	48" (122cm)	72" (183cm)
Chamber (tunnel) Length	3' (91.4cm)	4.5' (137cm)	3' (91.4cm)	4.5' (137cm)	4.5' (137cm)
CURE TIMES**	1 Row	1 Row	2 Rows	2 Rows	3 Rows
Plastisol @ 25 secs.**	300+/hr	450+/hr	600+/hr	900+/hr	1,350+/hr
Water Based @ 70 secs.**	100+/hr	150+/hr	200+/hr	300+/hr	450+/hr

Features

- HEAVY DUTY** "X-Series" Conveyor Belt Tracking System
- PRECISE** Infrared Focusing System provides more power for less \$
- ADJUSTABLE** 2" - 7" (5 - 17.7 cm) belt-to-heater height adjustment**
- ACCURATE** Digital PID Temperature controller is accurate to +/-1° F
- CONSISTENT** Heavy duty DC belt speed motor with digital voltage display
- INNOVATIVE** Engineered to be shorter and smaller with high heat and production.
- EXPANDABLE** Add heat chambers and belt extensions. (HD Drive required over 17' long)

Options

- Side heaters (ER-III only)***
- Add heat chambers @ 3' (.91m) or 4.5' (1.37m) long
- Belt extensions front or rear, 18" (46 cm) increments
- 3 Phase & 208, 380, 480 voltages available
- Exhaust Hood, provides extra fume extraction
- Hat support rail
- Locking casters for easy mobility
- HD Drive (standard on 78")

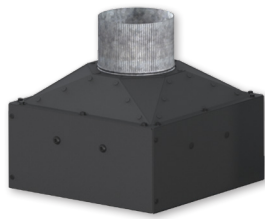
* Recommended maximum image width = heater width minus 6" (15cm).

** Production speeds are estimates are based on 16" centers and will vary depending on ink manufacturer, humidity of shop, and other variables.

*** Expand cure zone to full belt width. Heater height 4-7" (10.2 - 17.7cm) with optional side heaters.



INFRARED DRYER ACCESSORIES



EXHD

Add-On exhaust for
D-100 and D-1000

S-100



Mobile Stand w/ wheels

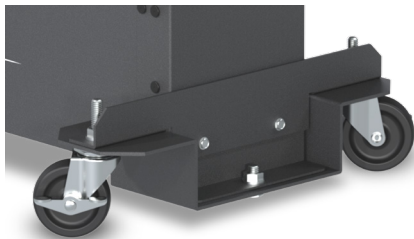
Two sizes available

- 27 x 27" (68.6 x 68.6 cm)
- 27 x 35" (68.6 x 88.9 cm)

Optional screen shelves and drawer kits

Perfect for:

- Presses and dryers
- PTF-100 powder shaker
- Additional worktop space

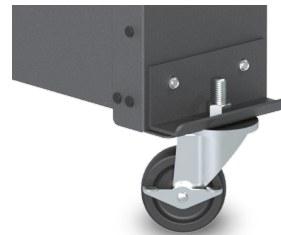


WS-E-DD

Drop Down Wheel Set for
DB, LR & EC-I Dryers

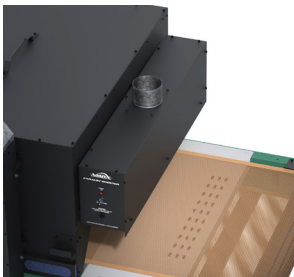
WS-EHD

Drop Down Wheel Set for
EC-II, ER & BR Dryers



WS-EC

Standard Wheel Set for
all non-tabletop Dryers



EXHAUST HOOD

Strongly recommended for DTF adhesives

FEATURES

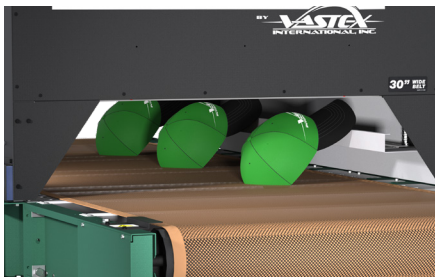
- Removes fumes at exit the dryer
- EXH-D1H fits D-100 and D-1000 (chamber mounted)
- EXH-18 fits 18" (46cm) to 30" (76cm) wide belts
- EXH-42 fits 54" (137cm) wide belts
- EXH-66 fits 78" (198cm) wide belts
- Available in 120v or 240v



CONVEYOR AIR BAR

FEATURES

- Cools ink as garments exit the dryer
- CABX-30 fits 33.1-39.1" (84-99cm) wide conveyor
- CABX-54 fits 58.3-64.3" (148-163cm) wide conveyor
- CABX-78 fits 82.3-88.3" (209-224cm) wide conveyor
- Works on many non-Vastex dryers
- Available in 120v or 240v



HAT SUPPORT RAIL

FEATURES

- Angles hats so front is parallel with heaters
- HR-1 fits EconoRed II dryers
- HR-2 fits EconoRed III & BigRed Dryers



CONVEYOR EXTENSIONS

Extend your conveyor in
18" (46cm), 36" (92cm) and
54" (137cm) increments



EconoRed II & III

Technical Specifications



	ER-II-30	ER-II-54	ERVP-III-24	ER-III-30	ER-III-54	ER-III-78
Heater Warranty	15 Year	15 Year	15 Year	15 Year	15 Year	15 Year
Defect Warranty	3 Year	3 Year	3 Year	3 Year	3 Year	3 Year
Shirts / Hr* Plastisol @ 25 secs	300+	2 Rows - 600+	450+	450+	2 Rows - 900+	3 Rows - 1,350+
Shirts / Hr* - Water-based/Discharge	100+ @ 70 secs.	2 Rows - 200+ @ 70 secs.	150+ @ 70 secs.	150+ @ 70 secs.	2 Rows - 300+ @ 70 secs.	3 Rows - 450+ @ 70 secs.
DTF Films / Hr*	100+	2 Rows - 200+	150+	150+	2 Rows - 300+	3 Rows - 450+
Time in Tunnel Range (mm:ss)	00:11 - 01:39	00:11 - 01:39	00:17 - 02:29	00:17 - 02:29	00:17 - 02:29	00:17 - 02:29
Belt Speed	1.8 - 23 FPM (0.5 - 7 MPM)	1.8 - 23 FPM (0.5 - 7 MPM)	1.8 - 23.6 FPM (0.6 - 7.2 MPM)	1.8 - 23.6 FPM (0.6 - 7.2 MPM)	1.8 - 23.6 FPM (0.6 - 7.2 MPM)	1.8 - 23.6 FPM (0.6 - 7.2 MPM)
Exhaust (Free Air)	650 CFM (18.4 CMM)	650 CFM (18.4 CMM)	352 CFM (10 CMM) Opt. 724 CFM (20.5 CMM)	650 CFM (18.4 CMM)	550 CFM (15.6 CMM)	700 CFM (19.9 CMM)
Exhaust Stack Diameter	8" (20.32 cm)	8" (20.32 cm)	6" (15.24 cm) Opt. 8" (20.5 CMM)	8" (20.32 cm)	8" (20.32 cm)	8" (20.32 cm)
Overall Length	87" (221 cm)	87" (221 cm)	105" (267 cm)	105" (267 cm)	105" (267 cm)	105" (267 cm)
Overall Width	45.2" (114.8 cm)	69.2" (175.8 cm)	48" (122cm)	45.2" (114.8 cm)	69.2" (175.8 cm)	93.2" (236.7 cm)
Overall Height	60.9" (154.7 cm)	60.9" (154.7 cm)	70" (178cm)	60.9" (154.7 cm)	60.9" (154.7 cm)	60.9" (154.7 cm)
Belt Width	30" (76 cm)	54" (137 cm)	24" (61 cm)	30" (76 cm)	54" (137 cm)	78" (404 cm)
Chamber Length	36" (91 cm)	36" (91 cm)	54" (137cm)	54" (137cm)	54" (137cm)	54" (137cm)
Chamber Infeed Width	34.5" (88 cm)	58.5" (149 cm)	34.5" (88 cm)	34.5" (88 cm)	58.5" (149 cm)	82.5" (209cm)
Chamber Infeed Height (adjustable)	2" - 7" (5 - 17.7 cm)	2" - 7" (5 - 17.7 cm)	2" - 7" (5 - 17.7 cm)	2" - 7" (5 - 17.7 cm)	2" - 7" (5 - 17.7 cm)	2" - 7" (5 - 17.7 cm)
Heat Range (@ Heater)	0-900 F° (0-482 C°) @ 240V	0-900 F° (0-482 C°) @ 240V	0-900 F° (0-482 C°) @ 240V	0-900 F° (0-482 C°) @ 240V	0-900 F° (0-482 C°) @ 240V	0-900 F° (0-482 C°) @ 240V
Heater Size & Standard Wattage	12" x 24" (30 x 61 cm) 2 @ 3,600 = 7,200 Watts @ 240V 12" x 24" (30 x 61 cm) 2 @ 3,000 = 6,000 Watts @ 400V & 480V	12" x 48" (30 x 122 cm) 2 @ 7,200 = 14,400 Watts @ 240V 2 @ 6,000 = 12,000 Watts @ 400V & 480V	12" x 24" (30 x 61 cm) 3 @ 3,600 = 10,800 Watts @ 240V	12" x 24" (30 x 61 cm) 3 @ 3,600 = 10,800 Watts @ 240V 12" x 24" (30 x 61 cm) 3 @ 3,000 = 9,000 Watts @ 400V & 480V	12" x 48" (30 x 122 cm) 3 @ 7,200 = 21,600 Watts @ 240V 3 @ 6,000 = 18,000 Watts @ 400V & 480V	12" x 72" (30 x 183 cm) 3 @ 7,800 = 23,400 Watts @ 240V, 400V, & 480V
Cost / hour to operate based on 10 cents / kwh	72 cents @ 240V 60 cents @ 380V & 480V	\$1.44 @ 240V \$1.20 @ 380V & 480V	\$1.08 @ 240V 90 cents @ 380V & 480V	\$1.08 @ 240V 90 cents @ 380V & 480V	\$2.16 @ 240V \$1.80 cents @ 380V & 480V	\$2.34 @ 240V, 380V, & 480V
Electrical Specs**	Amperage shown is for reference only, actual amperage at installation will depend on exact line voltage.					
240V, 1 Phase 3 wire 50/60 HZ	FLA = 36A	FLA = 69A	FLA = 55A	FLA = 53A	FLA = 102A	FLA = 110A
240V, 3 Phase 4 wire 50/60 HZ	FLA = 22A	FLA = 42A	FLA = 34A	FLA = 32A	FLA = 61A	FLA = 65A
400V, 3 Phase 5 wire 50/60 HZ	FLA = 12A	FLA = 21A	FLA = 19A	FLA = 17A	FLA = 30A	FLA = 37A
480V, 3 Phase 4 wire 50/60 HZ	FLA = 10A	FLA = 18A	FLA = 16A	FLA = 14A	FLA = 26A	FLA = 32A
Electrical Connection	All amps shown are FLA (Full Load Amps) , not recommended line size! Dryers on this page must be hard wired to the power terminal provided. A licensed electrician must be consulted and should refer to articles, 210.20(a), 215.3 and 310 of the NEC code.					
Shipping Weight**	665 lbs (302 kg)	1,130 lbs (513 kg)	1,000 lbs (454 kg)	900 lbs (409 kg)	1,375 lbs (624 kg)	Call for details
Shipping Dimensions**	61" x 43" x 65" (155 x 110 x 166 cm)	78" x 49" x 65" (199 x 125 x 166 cm)	61" x 61" x 65" (155 x 155 x 166 cm)	61" x 61" x 65" (155 x 155 x 166 cm)	93" x 65" x 65" (237 x 166 x 166 cm)	Call for details

1 in = 2.54 cm
1 lb = 0.454 kg

* Production speeds are estimates are based on 16" centers and will vary depending on ink manufacturer, humidity of shop, and other variables.

** Alternate wattages and voltage may be available by special request. (208V)

*** All shipping weights and dimensions are for continental US shipping only. Call for other shipping specifications. Ex-works from Bethlehem, PA.