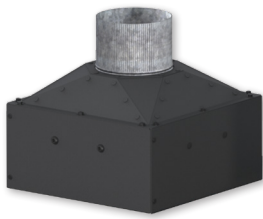


INFRARED DRYER ACCESSORIES



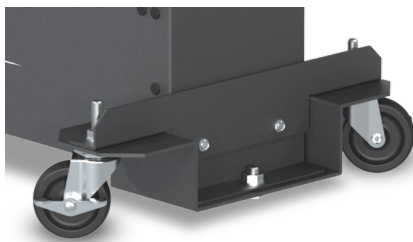
EXHD
Add-On exhaust for
D-100 and D-1000



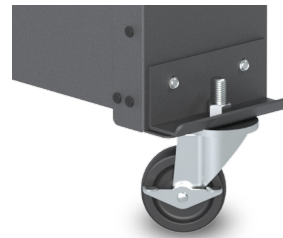
SI-27
Stand for D-100



**SI-27 W/
SI-27-DEMT**
Stand for D-1000

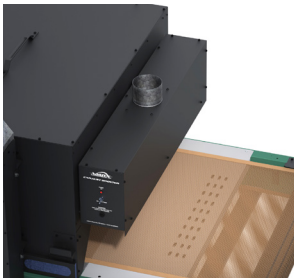


WS-EDD
Drop Down Wheel Set for
DB, LR & EC-I Dryers



WS-EC
Standard Wheel Set for
all non-tabletop Dryers

WS-EHD
Drop Down Wheel Set for
EC-II, ER & BR Dryers



EXHAUST HOOD

FEATURES

- Removes fumes at exit the dryer
- EXH-18 fits 18" (46cm) wide belts
- EXH-30 fits 30" (76cm) wide belts
- EXH-54 fits 54" (137cm) wide belts
- Available in 120v or 240v



CONVEYOR AIR BAR

FEATURES

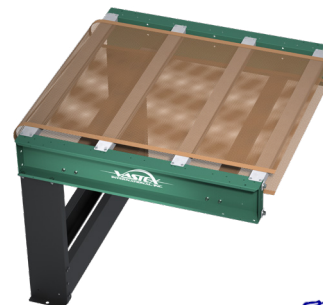
- Cools ink as garments exit the dryer
- CAB-18 fits 16-26" (40-66cm) wide belts
- CAB-30 fits 30" (76cm) wide belts
- CAB-54 fits 54" (137cm) wide belts
- CAB-78 fits 78" (198cm) wide belts
- Work on many non-Vastex dryers
- Available in 120v or 240v



HAT SUPPORT RAIL

FEATURES

- Angles hats so front is parallel with heaters
- HR-1 fits EconoRed II dryers
- HR-2 fits EconoRed III & BigRed Dryers



CONVEYOR EXTENSIONS

Extend your conveyor in
18" (46cm), 36" (92cm) and
54" (137cm) increments

