



- Aluminum honeycomb pallets (i)
- Squeegees with pneumatic movement (i)
- Independent control panel on all print heads (i)
- Choice of pneumatic screen holder: "U" clamp or pin system (i)
- Print head central elevation
- Frequency drive rotation system for a quick and smooth index (i)
- Print heads with high-lift position for quick and easy screen cleaning (i)
- Central control panel with polycromatic LCD touch screen (10") (i)
- Micro registration screen system with vernier scale (i)
- Individual controls for managing print and flood speed, height and angle of the squeegees and stroke length (i)

## :: OPTIONS

- FLASH CURE UNIT – IN THE NANO THESE COME EMBEDDED IN THE MACHINE.

30 Years of knowledge, experience and engineering condensed into a **powerful platform for small prints**. The NANO can be moved **without the need to level** the machine increasing its **versatility**.



:: NANO FLASH CURE UNIT EMBEDDED IN THE STRUCTURE



:: COMMAND PANEL IN EACH PRINTING HEAD

ROQPRINT NANO	P10
number of colors (max.)	4
number of pallets	10
number of flash cure connection units (optional)	4
max drying area	200 x 200 / 7.9" x 7.9"
maximum print size (mm/inch)	200 x 200 / 7.9" x 7.9"
maximum screen size (mm/inch)	330 x 500 / 13" x 19.7"
maximum frame profile / thickness (mm/inch)	30 x 30 / 1.2" x 1.2"
index precision (mm/inch)	+/-0.025 / 0.001"
maximum production (pieces/h) *	1200
compressed air consumption (7 bar/102 psi) **	250 l/min - 8.9 cfm + number of each printhead
maximum consumption (kVA) ***	2
machine diameter (mm/feet)	2180 / 7.2'
total height (mm/feet)	2150 / 7'
minimum width of the base (mm/feet)	800 / 2.6'

\* one squeegee with flooding for a A4 print.

\*\* each printhead consumption: 60L/min | 2.11cfm in 20 pieces/min.

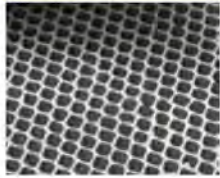
\*\*\* these values exclude the consumption with flash-curing, they should be calculated separately, taking into account the number and model of the flash cure employed on the machine. See flash cure page.

- power supply: 220V, 3x220V, 3x400V - 50Hz or 60Hz.

- the machine is delivered completely assembled.



## Common features of the screen printing machines:



### ALUMINUM HONEYCOMB PALLETS

The optimal material in screen-printing pallet construction offering temperature regulation and light weight construction. Since these pallets are lighter than traditional pallets, they allow for lower energy consumption and eliminate inertia problems.



### POLYCHROMATIC CENTRAL PANEL WITH TOUCH-SCREEN

ROQ presses use a central console that controls the press and all its accessories. We designed this control panel to be intuitive and user-friendly.



### COMMAND PANEL IN EACH PRINTING HEAD

Each print head offers an additional control panel allowing the user to control all functions pertaining to that station as well as start, stop and palette rotation features.



### PRINT HEAD ELEVATION FOR EASY SCREEN CLEANING

The print heads have a mechanical balancing system that allows for effortless manual lifting of the print head for cleaning the screens. In the OVAL EVOLUTION, this feature is automated.



All print heads are equipped with height adjustment, angle and stroke lengths as well as print speed and coverage speed. The squeegees movement is electric with AC inverter. On the NANO however, squeegee movement is pneumatic.



**PNEUMATIC  
SCREEN HOLDER  
"U" CLAMP SYSTEM**



OPTIONAL FOR  
"U" CLAMP:  
**UNIREG SYSTEM**



**PNEUMATIC SCREEN  
HOLDER PIN SYSTEM**



OPTIONAL FOR  
PIN SYSTEM:  
**NEWMAN SYSTEM**



#### **MICRO REGISTRATION SYSTEM WITH VERNIER SCALE**

Precision system that allows for an accurate, simple and quick final adjustment of the screens.



#### **PLACEMENT OF THE FLASH CURE UNITS UNDER THE PRINT HEAD**

The ROQDRY units can be rolled under any print head lifted in the high position. They get their power from a plug located on the base of the machine. There is no need for an external power drop. There is an additional command connection at the base of the machine allowing communication with the main control panel. The NANO press has flash cure units incorporated in the machine.

**FREQUENCY DRIVE ROTATION FOR A QUICK AND SMOOTH INDEX (NANO AND YOU)  
AC SERVO-MOTOR ROTATION SYSTEM FOR A GREATER PRECISION ON THE SPINNING AND SMOOTHER ROTATIONS (ECO, OVAL PRO, OVAL EVOLUTION)**

### **OPTIONS:**



#### **CONNECTIONS FOR THE FLASH CURE UNITS ON THE MACHINE FRAME**

All ROQPRINT machines accessories are connected directly to the machine frame. These links may include compressed air, power and control cable to sync the module with the machine making the whole work as one and avoiding any loose cables on your shop or any loss of time.



#### **LASERS FOR POSITIONING OF THE TEXTILE PIECES**

All ROQPRINT machines can be equipped with lasers to ensure that the placement of the textile pieces is consistent improving the work results.



#### **SKIP FUNCTION**

Allows for the operator to indicate the machine to skip a pallet that was not loaded with fabric. By not printing on that pallet it will generate savings in energy, consumables and others. Can come in a form of a button or a pedal.