

DTG/WB/PLASTISOL INFRARED DRYERS

BigRed 4-D SERIES

**15 YEAR
HEATER WARRANTY**



BR4D-V54

- Focused exhaust system to remove fumes/moisture within chamber
- Excellent air flow to cool the skin of the dryer
- Dual zone heat control, four powerful infrared elements, and makeup air make it great for inkjet curing!
- Filtered exhaust with fault detection
- 54" wide dryer can cure 3 rows of garments with optional side heaters (12" image with 16" centers)

CE CERTIFIED
BY CERTIFICATION EXPERTS
THE NETHERLANDS

Standard Wattage
Belt Width x Length
Chamber (tunnel) Length
Plastisol @ 25 secs.**
Water Based/Discharge @ 50 secs. **
Digital White Ink @ 3 min. **
Digital White Ink @ 8 min. **

BR4D-V30

11,400w
30" x 8¾' (76.2 x 267cm)
4.5' (137.2cm)

BR4D-V54*

22,800w
54" x 8¾' (137.2 x 267cm)
4.5' (137.2cm)

CURE TIMES

	1 Row	3 Rows	2 Rows
Plastisol @ 25 secs.**	475+/hr	1,425+/hr	950+/hr
Water Based/Discharge @ 50 secs. **	216+/hr	648+/hr	432+/hr
Digital White Ink @ 3 min. **	60/hr	180/hr	120/hr
Digital White Ink @ 8 min. **	24/hr	60/hr	48/h
		(w/ optional side heaters)	

Features

ACCURATE	Two temperature controllers are accurate to +/-1 degree F. Digital PID with Fuzzy logic is the most advanced in the industry.
SMART	Cool Down Mode for easier shut down.
ADJUSTABLE	4" - 7" (10.2 - 17.7 cm) belt-to-heater height adjustment
CONVENIENT	Digital belt speed voltmeter, a must have!
VERSATILE	Make-up Air and Negative Exhaust Air, removes moisture and fumes fast.
FILTERED	Filtered air intake provides clean curing air, no recycled fumes!
HEAVY DUTY	"X-Series" Conveyor Belt Tracking System w/HD drive.
EXPANDABLE	Add heat chambers and belt extensions. (rear idler required over 17' long)
CONSISTENT	Optional side heaters allow even curing across entire width of heating element

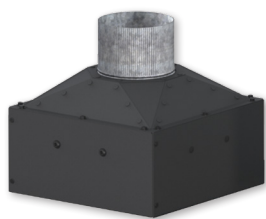
Options

- Side heaters
- Add heat chambers @ 4.5' (137cm) long.
- Belt extensions, front or rear, 18" (46 cm) increments
- 3-Phase, 208, 380, 480 voltages available
- Conveyor Air Bar
- Exhaust Hood, provides extra fume extraction
- Locking casters for easy mobility
- Donut Probe

* All BigRed V54 Dryers come standard in Three Phase wiring.
** Production speeds are estimates are based on 16" centers and will vary depending on ink manufacturer, humidity of shop, and other variables.



INFRARED DRYER ACCESSORIES



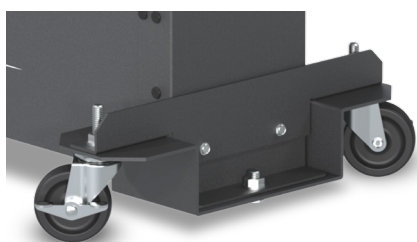
EXH-D
Add-On exhaust for
D-100 and D-1000



SI-27
Stand for D-100



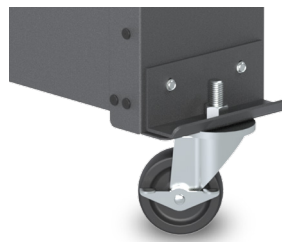
**SI-27 W/
SI-27-DEMT**
Stand for D-1000



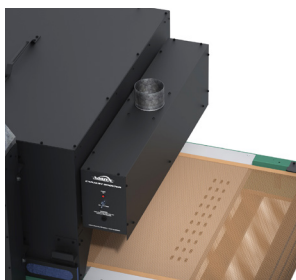
WS-E-DD
Drop Down Wheel Set for
DB, LR & EC-I Dryers

WS-EHD

Drop Down Wheel Set for
EC-II, ER & BR Dryers



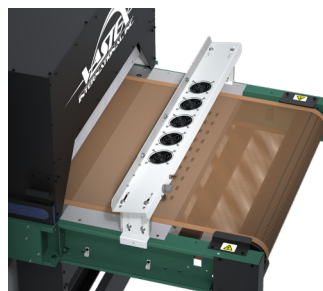
WS-EC
Standard Wheel Set for
all non-tabletop Dryers



EXHAUST HOOD

FEATURES

- Removes fumes at exit the dryer
- EXH-18 fits 18" (46cm) wide belts
- EXH-30 fits 30" (76cm) wide belts
- EXH-54 fits 54" (137cm) wide belts
- Available in 120v or 240v



CONVEYOR AIR BAR

FEATURES

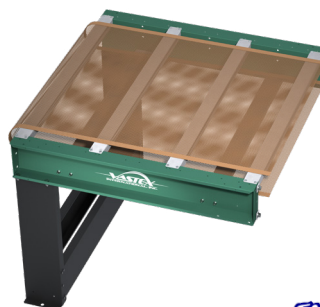
- Cools ink as garments exit the dryer
- CAB-18 fits 16-26" (40-66cm) wide belts
- CAB-30 fits 30" (76cm) wide belts
- CAB-54 fits 54" (137cm) wide belts
- CAB-78 fits 78" (198cm) wide belts
- Work on many non-Vastex dryers
- Available in 120v or 240v



HAT SUPPORT RAIL

FEATURES

- Angles hats so front is parallel with heaters
- HR-1 fits EconoRed II dryers
- HR-2 fits EconoRed III & BigRed Dryers



CONVEYOR EXTENSIONS

Extend your conveyor in
18" (46cm), 36" (92cm) and
54" (137cm) increments



EconoRed VI & BigRed

Technical Specifications

CE	ER-VI-30	ER-VI-54	ER-VI-78	BR4D-V30	BR4D-V54
Heater Warranty	15 Year	15 Year	15 Year	15 Year	15 Year
Defect Warranty	3 Year	3 Year	3 Year	3 Year	3 Year
Shirts / Hr* Plastisol @ 25 secs	900+	2 Rows - 1,800+	3 Rows - 2,700+	475+	3 Rows - 1,425+ 2 Rows - 950+
Shirts / Hr* - Waterbased/ Discharge	300+ @ 70 secs.	2 Rows - 600+ @ 70 secs.	3 Rows - 900+ @ 70 secs.	216+ @ 50 secs.	3 Rows - 648+ @ 50 secs. 2 Rows - 432+ @ 50 secs.
Shirts/hr* - DTG/digital	N/A	N/A	N/A	60 @ 3 min. 24 @ 8 min.	3 Rows - 180 @ 3 min, 72 @ 8 min. 2 Rows - 120 @ 3 min, 48 @ 8 min.
Time in Tunnel Range (mm:ss)	00:34 - 02:58	00:34 - 02:58	00:34 - 02:58	00:12 - 01:45	00:12 - 01:45
Belt Speed	3 - 36 FPM (0.9 - 11 MPM)	3 - 36 FPM (0.9 - 11 MPM)	3 - 36 FPM (0.9 - 11 MPM)	1.8 - 23.6 FPM (0.6 - 7.2 MPM)	1.8 - 23.6 FPM (0.6 - 7.2 MPM)
Exhaust (Free Air)	2 @ 380 CFM (10.7 CMM)	2 @ 550 CFM (15.6 CMM)	2 @ 700 CFM (19.8 CMM)	500 CFM (14.2 CMM)	700 CFM (19.8 CMM)
Exhaust Stack Diameter	2 @ 8" (20.32 cm)	2 @ 8" (20.32 cm)	2 @ 8" (20.32 cm)	6" (15.24 cm)	8" (20.32 cm)
Overall Length	159" (404 cm)	159" (404 cm)	159" (404 cm)	105" (267 cm)	105" (267 cm)
Overall Width	45.2" (114.8 cm)	69.2" (175.8 cm)	93.2" (236.7 cm)	47.3" (120.2 cm)	71.4" (181.4 cm)
Overall Height	60.9" (154.7 cm)	60.9" (154.7 cm)	60.9" (154.7 cm)	51.6" (131.1 cm)	51.6" (131.1 cm)
Belt Width	30" (76 cm)	54" (137 cm)	78" (198 cm)	30" (76 cm)	54" (137 cm)
Chamber Length	108" (275cm)	108" (275cm)	108" (275cm)	54" (137cm)	54" (137 cm)
Chamber Infeed Width	34.5" (88 cm)	58.5" (149 cm)	82.5" (209cm)	34.5" (88 cm)	58.5" (149 cm)
Chamber Infeed Height (adjustable)	2" - 7" (5 - 17.7 cm)	2" - 7" (5 - 17.7 cm)	2" - 7" (5 - 17.7 cm)	4.5" - 7" (11.5 - 17.7 cm)	4.5" - 7" (11.5 - 17.7 cm)
Heat Range (@ Heater)	0-900 F° (0-482 C°) @ 240V	0-900 F° (0-482 C°) @ 240V	0-900 F° (0-482 C°) @ 240V	0-900F° (0-482C°) @ 240V 0-1150F° (621C°) - booster	0-900F° (0-482C°) @ 240V 0-1150F° (621C°) - booster
Heater Size & Standard Wattage**	12" x 24" (30 x 61 cm) 6 @ 2,600 = 15,600 Watts 240V, 400V, & 480V	12" x 48" (30 x 122 cm) 6 @ 5,200 = 31,200 Watts 240V, 400V, & 480V	12" x 72" (30 x 183 cm) 6 @ 7,800 = 46,800 Watts 240V, 400V, & 480V	4 @ 12" x 24" (30 x 61 cm) Zone 1 @ 3,600 Watts Zone 2 @ 7,800 Watts 11,400 Watts Total 240V, 400V, & 480V Optional Side Heaters 2 @ 3" x 47" (7.6 x 120 cm) 1,400 watts per side	4 @ 12" x 48" (30 x 122 cm) Zone 1 @ 7,200 Watts Zone 2 @ 15,600, Watts 22,800 Watts Total 240V, 400V, & 480V Optional Side Heaters 2 @ 3" x 47" (7.6 x 120 cm) 1,400 watts per side
Cost / hour to operate based on 10 cents / kwh	\$1.56 @ 240V	\$3.12 @ 240V	\$4.68 @ 240V	\$1.14 @ 240V	\$2.28 @ 240V
Electrical Specs**	All amps listed below are +/- 10%				
240V, 1 Phase 3 wire 50/60 HZ	FLA = 76A	N/A	N/A	FLA = 59A	FLA = 110A
240V, 3 Phase 4 wire 50/60 HZ	FLA = 45A	FLA = 89A	N/A	FLA = 35A	FLA = 67A
400V, 3 Phase 5 wire 50/60 HZ	FLA = 27A	FLA = 50A	FLA = 73A	FLA = 21A	FLA = 38A
480V, 3 Phase 4 wire 50/60 HZ	FLA = 24A	FLA = 42A	FLA = 61A	FLA = 18A	FLA = 33A
Electrical Connection	All amps shown are FLA (Full Load Amps) , not recommended line size! Dryers on this page must be hard wired to the power terminal provided. A licensed electrician must be consulted and should refer to articles, 210.20(a), 215.3 and 310 of the NEC code.				
Shipping Weight***	1 @ 900 lbs (409 kg) 1 @ 755 lbs (343 kg)	1 @ 1,375 lbs (624 kg) 1 @ 1,325 lbs (601 kg)	1,170 lbs (531 kg)	1,018 lbs (462 kg)	1,438 lbs (653 kg)
Shipping Dimensions***	2 @ 61" x 43" x 65" (155 x 110 x 166 cm)	2 @ 93" x 65" x 65" (237 x 166 x 166 cm)	107 x 64" x 73" (272 x 163 x 185 cm)	72" x 61" x 63" (183 x 155 x 160 cm)	92" x 65" x 63" (234 x 161 x 160 cm)

1 in = 2.54 cm
1 lb = 0.454 kg

* Production speeds are estimates are based on 16" centers and will vary depending on ink manufacturer, humidity of shop, and other variables. Optional side heaters are required for 3 rows.

** Alternate wattages and voltage may be available by special request. (208V)

*** All shipping weights and dimensions are for continental US shipping only. Call for other shipping specifications. Ex-works from Bethlehem, PA.