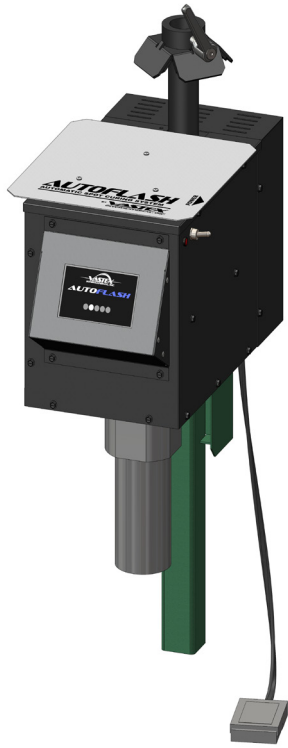


# INFRARED FLASH CURE ACCESSORIES

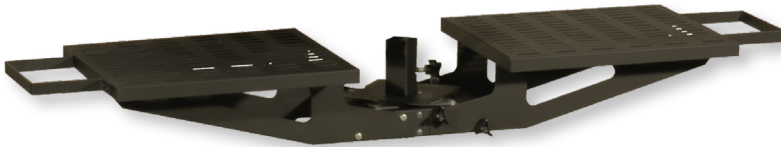


## AUTOFLASH

### FEATURES

- Touch Screen Display
- Selectable clockwise or counterclockwise rotation
- Smooth start and stop with eccentric arm drive
- 0 to 99 second adjustable dwell timer
- Foot pedal actuator on 7 foot cord

RedFlash shown with AutoFlash  
and SHHD Stand



## ROTARY TABLE

### FEATURES

- Easily mounts to standard and SHHD stands
- Rotates under flash head to cure shirts
- Two sizes available for use with 18" sq and 18" x 24" flash

F-100 shown with Rotary Table



## SHHD-STAND

### FEATURES

- Super heavy duty stand to hold added weight
- Ideal for use with AutoFlash or heavier AirFlash
- Offset legs allow for stand to fit mostly under press

